

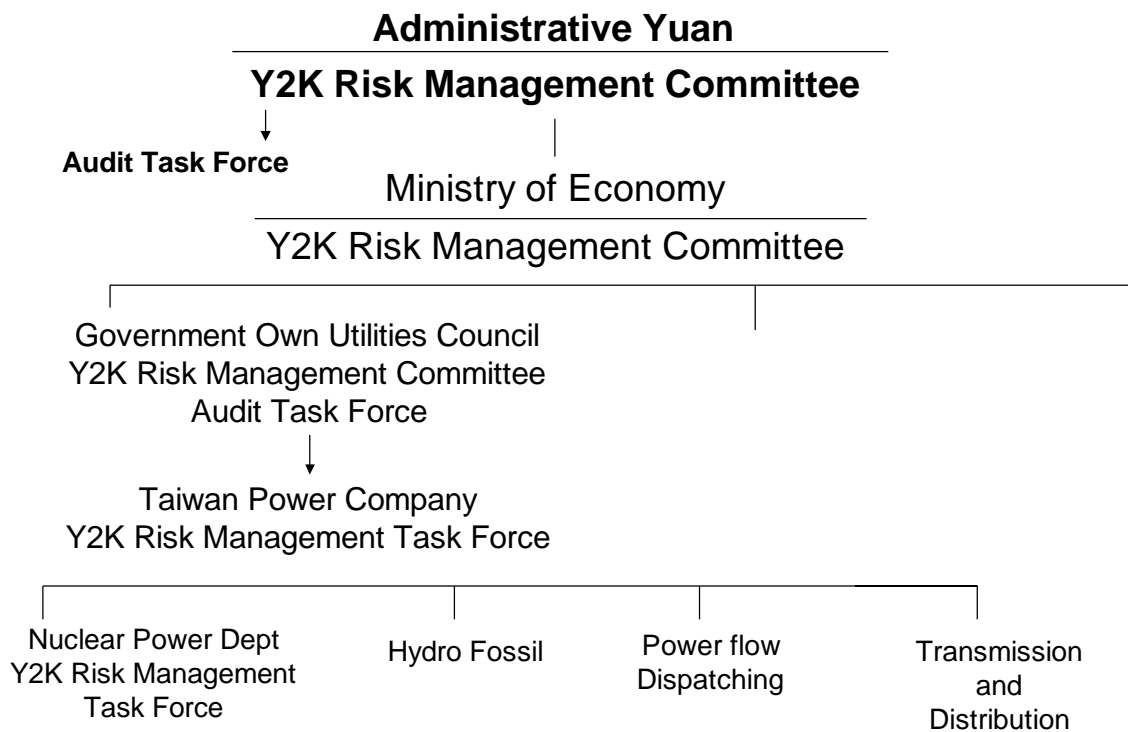
Control Millennium Bug in Taiwan Power Company

Chen Wen-Hua

Millennium Bug —————→ Y2K Time
Problem

Y2K is a risk management

Government Organisation



Y2K Approach

- Readiness**
- Compliance**
- You know your systems better than anyone else**

Tackling Y2K Methodology

Inventory

- Listing of all components, systems

Screen

- Components and systems with digital, microprocessor, computer
- Date-dependent

Risk Assessment

- Safety to public, nuclear power plant
- Potential to operation
- Potential risk to administration

Remediation

- Replacement
- Retire
- Upgrade
- Set back to year 1998
- Test

Tackling Y2K Methodology

Validation

- By test
- Components level
- System level
- Plant level

Contingency Plan

Audit by government

- Internal
- External

Documentation

Audit and Assessment by Government

Each power plant does:

SAQ (Self Assessment questionnaire)

- MIS**
- non-MIS**
- computer structure**
- OA**
- Environment**
- Research**
- up, down stream (supplier0**
- products**

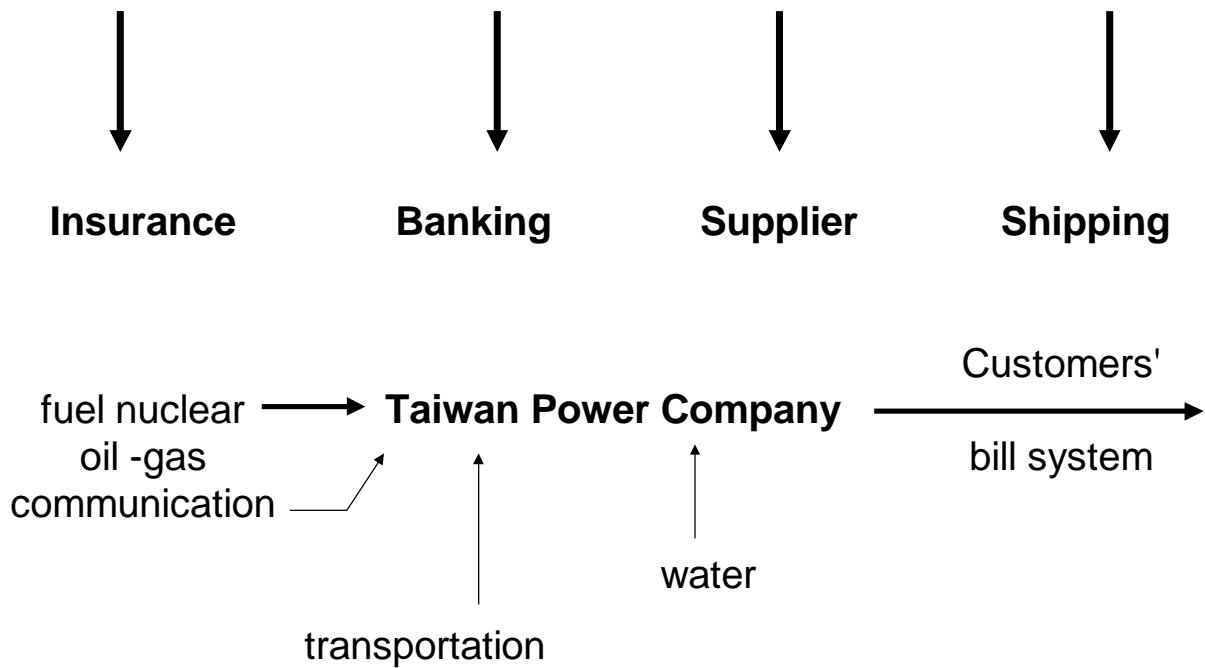
Ranking risk management (Ranking by time)

- | | | |
|-----------------------|----------------------|-------------------|
| – green light | (low risk) | by Q1.1999 |
| – yellow light | (medium risk) | by Q2 1999 |
| – red light | (high risk) | by Q3 1999 |

Status of Progress of Y2K Risk Management

Nuclear Power	100% ready
Fossil and Hydro	85% ready
Capacity	90% finish
Winter Demand	70%
Due Date: 06.30.1999 (including contingency plan)	

Contingency Plan Process



Thank You !!

Merci !!